

# The Soy Food Industrial Complex

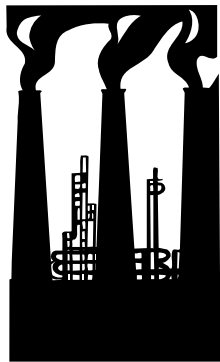
*Soy Protein Isolate Is Often Processed With Hexane—a Gasoline-like Solvent*

Monsanto is the largest supplier of soy seeds and harsh herbicides.

Soy farmers often spray toxic herbicides—up to 10 times per crop.



Industrial soy agriculture is a major contributor to poisoning our groundwater, rivers, and oceans—and to killing beneficial earthworms.

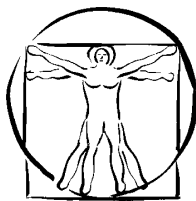


ADM and others crush soybeans using **hexane**—an industrial solvent that is a by-product of gasoline.

**Hexane** is a major air pollutant, off-gassing into the atmosphere.

Dupont, ADM and Cargill are the largest suppliers of **hexane-processed** soy protein isolate to “natural food” brands offering soy bars and protein powders. Foods **not** processed with **hexane** are; soy milk, tofu, and fermented soy products.

**Hexane** is highly flammable and a toxic hazard to workers. On 8-29-03 Reuters reported “*Eight injured in Iowa Soy Plant Explosion*” with three workers in critical condition from burning **hexane** (see reverse for full story).



How can non-organic soy foods sprayed and processed with petroleum-based chemicals be considered health foods? The average American diet consists of up to 20% soy oil, throwing off our Omega-3 – Omega 6 ratio and leading to major health issues.

## Simple Action Step: Buy Only Foods Displaying

Some firms state “made with organic soy” or “NON-GMO” yet still include non-organic soy protein isolate processed with **hexane**.



6101 Cliff Estate Rd, Little Marais, MN 55614  
Tel: 218-226-4164 · Fax: 218-353-7652  
[www.organicconsumers.org](http://www.organicconsumers.org)

**Campaigning for Food Safety, Organic Agriculture, Fair Trade & Sustainability.**

Over ►

**Reuters**

**UPDATE - Eight injured in Iowa soy plant explosion**

**Friday August 29, 6:04 pm ET**

CHICAGO, Aug 29 (Reuters) - An explosion at a soybean processing plant in western Iowa injured eight plant employees on Friday, five of them critically, officials from the company, police and hospital said.

The Sergeant Bluff, Iowa, plant, owned by Ag Processing Inc. (AGP), was shut at the time of the explosion for routine maintenance work, according to Woodbury County sheriff Dave Amick. He said the cause of the explosion, at around 9 a.m. CDT (1400 GMT), was not yet known. "There was an explosion, with a fire," Amick said.

AGP spokesman Mike Maranell said the explosion took place at the extraction facility of the plant that crushes soybeans to produce soymeal feed and soybean oil. He said it was too early to say when the facility would resume operations.

The plant also produces methyl ester, a biodegradable solvent made from soy oil that is used as a lubricant in soy diesel fuel.

AGP said in a written statement that eight employees were injured in the incident, and five of them are in critical condition.

"A complete and thorough investigation is being conducted and it may be several days before the exact cause is know," the company said.

Rick Wollman, spokesman for Mercy Medical Center in nearby Sioux City, said the injured were treated at the hospital's emergency unit. Three had been released, and two, in critical condition, were airlifted to Nebraska Medical Center in Omaha, Nebraska.

*"The extent of their injuries were such that we could not treat them,"* he said, adding that they had inhaled a chemical called **hexane** that is used at the AGP plant.

The two, as well as the other three AGP employees still at the hospital, had also suffered from external burns.

AGP has said the plant has the capacity to produce 50 million pounds of product a year, and was designed to be able to produce 200 million pounds per year as demand grows. (Additional reporting by Julie Ingwersen, Eric Noe)